

## DIRECTCONTROL FOR MAC OS X

# Advanced Active Directory integration for Mac OS X, including desktop lockdown via Windows Group Policy and JITC-certified smart card support

Centrify DirectControl for Mac OS X enables IT administrators to add Mac computers to their Windows Active Directory infrastructure to centrally manage the authentication, authorization and configuration of Mac OS X systems as well as to lock down the user's desktop environment. This enables IT administrators to manage and secure Mac OS X systems using the same tools and processes already in place to manage Windows systems.

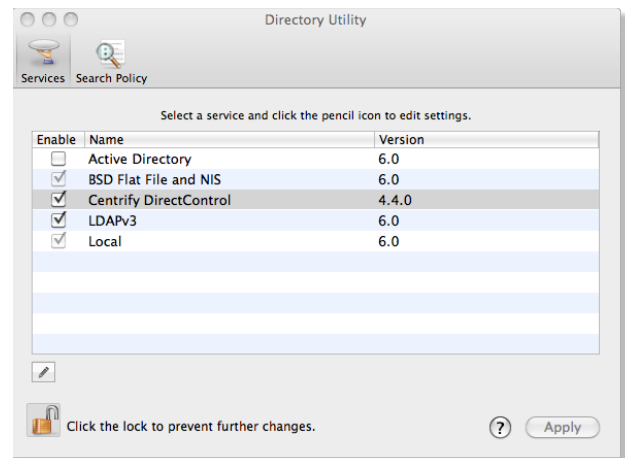
DirectControl is the first solution to provide support for CAC, PIV or .NET smart card based login to Active Directory in the same fashion as Windows systems ensuring strong authentication and single sign-on to other applications and services for Active Directory users. Smart card login combined with DirectControl's ability to enforce security policies required in high security environments helps to ensure compliance with corporate and federal policies, enabling further adoption of Mac OS X systems in these environments.

DirectControl for Mac OS X is part of the Centrify Suite, an integrated set of solutions for UNIX and Linux as well, including secure authentication and single sign-on, role-based access control, privileged identity management, user-level auditing, server isolation and encryption of data-in-motion.

### STRENGTHEN SECURITY

**IT managers can strengthen security and better comply with regulatory requirements by using DirectControl to:**

- True centralized control over authentication, authorization and administration of Mac OS X systems leveraging familiar Active Directory-based tools.
- Centrally enforce strong authentication requirements for login with CAC, PIV or .NET smart cards to Active Directory.
- Leverage Active Directory maintained trusted roots and CRLs to ensure Zone-based access controls enable you to organize Macs (and UNIX or Linux systems) into logical groups for departments, labs, etc., and grant access to the systems based on Zones.
- Separation of duties enables Active Directory-based delegated administration for managing user access to systems without having to grant domain admin rights to Mac administrators.



- Security policies are maintained across all systems through Group Policy, for both computer-related security settings as well as end-user-specific settings.

Centrify DirectControl for Mac OS X plugs into the native Mac directory services, enabling the Mac to fully participate in a Windows Active Directory domain.

- Enable offline login to Mac laptops with cached credentials (similar to Windows XP) without creating an account on the local computer.

### ENHANCE IT EFFICIENCY

**IT managers can streamline operations and reduce costs by using DirectControl to:**

- Globally configure Mac systems via Active Directory Group Policy — manage DirectControl configuration and OS X security settings; lock down System Preferences; enforce screensaver locking, and more. (See the reverse side of this data sheet for details.)
- Leverage existing administrative tools and processes to manage both Windows and Mac systems reducing the cost of supporting multiple compute platforms while providing system of choice to end-users.
- Rapidly integrate hundreds or thousands of Mac systems into Active Directory using DirectControl's workstation mode deployment model combined with Apple Remote Desktop software distribution.

## BENEFITS FOR END-USERS

End-users will notice few changes to their Mac OS X user experience (a good thing) while the systems are centrally managed, enabling IT to provide a much higher level of service to these users.

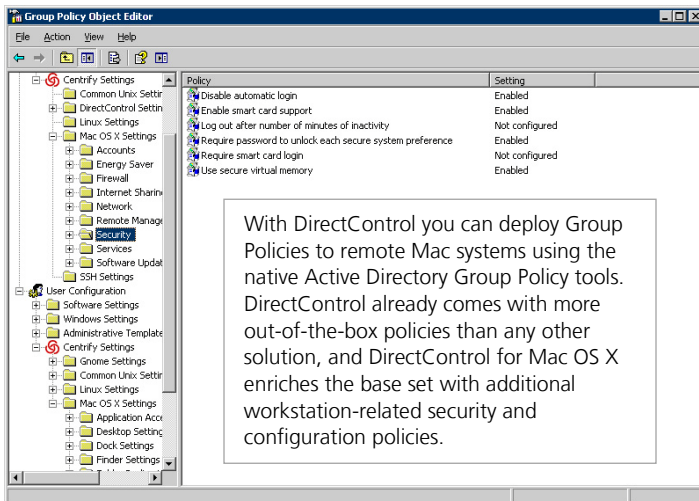
Additional benefits for the end-users include:

- No extra account or password information to remember – Active Directory credentials (userid and password or smart card and PIN) can be used to log into Mac OS X or Windows computers as required.
- Single sign-on is maintained for access to Windows file shares and SPNEGO-enabled web sites, and additionally single sign-on is provided for access to Windows print queues.
- Home directories can be centrally configured to support different usages for laptop users with either local home directories, portable home directories or FileVaulted portable home directories synced to centralized network storage. Desktop users can be configured with either local or network home directories, including those on SMB, AFP or NFS-mounted shares.
- User environments can also be centrally managed to ensure a consistent interface when users move between many different systems.

## GROUP POLICY FOR MAC OS X

Centrally secure and configure Mac OS X systems using the same Active Directory tools you use to manage Windows system

Centrify DirectControl is the most robust solution that enables IT managers to centrally secure and configure Mac systems through Active Directory Group Policy. Because Mac systems are used primarily as workstations, Centrify has enriched its existing DirectControl for Mac OS X solution with a set of policies that have been tailored to the needs of IT managers who are responsible for the security and configuration of these systems. Using the same Active Directory tools they use today for Windows systems, IT managers can set security and configuration policies for Mac systems without needing deep platform-specific knowledge.



GROUP POLICIES	GROUPS OF SETTINGS AVAILABLE
<b>Computer Group Policies</b>	<ul style="list-style-type: none"><li>▪ Account Settings</li><li>▪ Energy Saver Settings</li><li>▪ Firewall Settings</li><li>▪ Internet Sharing</li><li>▪ Network Settings</li><li>▪ Remote Management</li><li>▪ Security</li><li>▪ Sharing Services</li><li>▪ Software Update Settings</li></ul>
<b>User Group Policies</b>	<ul style="list-style-type: none"><li>▪ Application Access</li><li>▪ App Store Access</li><li>▪ Desktop and Screen Saver</li><li>▪ Dock Settings</li><li>▪ Finder Settings</li><li>▪ Folder Redirection</li><li>▪ Login Settings</li><li>▪ Media Access Controls</li><li>▪ Mobility Sync Settings</li><li>▪ Other Application Settings</li><li>▪ Scripts (Login/Logout)</li><li>▪ Security Settings</li><li>▪ System Preference Settings</li></ul>

## Supported Platforms

DirectControl for Mac OS X runs on:

- Mac OS X 10.4 PowerPC & Intel
- Mac OS X Server 10.4 PowerPC & Intel
- Mac OS X 10.5 PowerPC & Intel
- Mac OS X Server 10.5 PowerPC & Intel
- Mac OS X 10.6 Intel
- Mac OS X Server 10.6 Intel

## About Centrify

Centrify is the leading provider of security and compliance solutions that centrally control, secure and audit cross-platform systems and applications using Active Directory.

To contact us at:

PHONE: +1 (408) 542-7500  
EMEA: +44 (0) 1344 317950  
EMAIL: [info@centrify.com](mailto:info@centrify.com)  
WEB: [www.centrify.com](http://www.centrify.com)

To get started, try our free version:

[www.centrify.com/express](http://www.centrify.com/express)

To purchase:

[www.MacMall.com](http://www.MacMall.com)

Copyright © 2005-2011 Centrify Corporation. All rights reserved. Centrify and DirectControl are trademarks of Centrify Corporation. DS-007-2011-02-15